

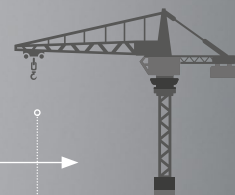


# OUR SOLUTIONS, YOUR SUCCESS.

International Trade Fair for Construction  
Equipment and Technologies.

May 26 - 29, 2020, Moscow

→ [bauma-ctt.ru](http://bauma-ctt.ru)



**bauma CTT RUSSIA** is the leading international exhibition for construction equipment in Russia, CIS and eastern Europe with a 20-year history.

**bauma CTT RUSSIA** is a part of **bauma NETWORK**, exhibitions for construction equipment around the world, organized by one of the largest trade fair companies, Messe München GmbH.

## Exhibitor's Feedback

"The exhibition was organized on the highest level! **bauma CTT RUSSIA** satisfied our expectations. The number of the visitors and exhibitors was excellent.

There is no equal exhibition on the scale of exhibition products in Russia. We are regular exhibitor at **bauma CTT RUSSIA** and do not want to change anything."

**Andrei Smolyanov**

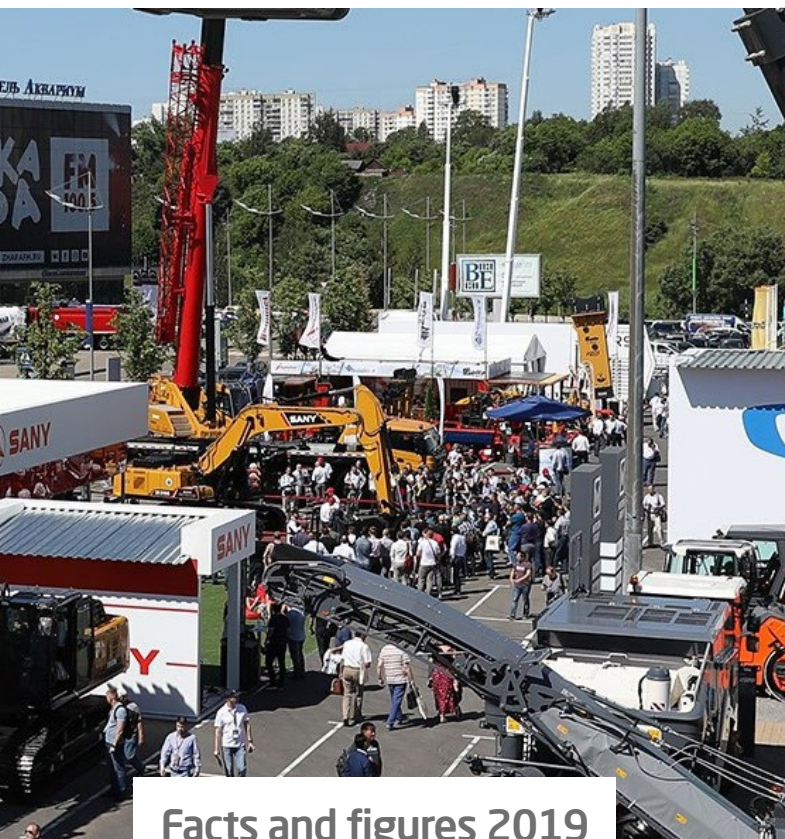
Commercial Director, "Kudesnik" Ltd.

"Wow! - This is the first thing you would say when you saw our booth. It was remarkable not only for its extraordinary design but also for his breathtaking performance featuring construction equipment that attracted 2/3 of visitors to our booth. Our excavator impressed with its flexible and outstanding performance.

The exhibition was extremely effective for our company. We successfully sold 7 crawler cranes and 8 excavators worth more than \$ 5.5 million during the first day of the show."

**Kim Lee**

International Sales Vice President, "Sany Heavy Industry" Co., Ltd.



## Facts and figures 2019

**55 000 m<sup>2</sup>**  
exhibition space

**603**  
exhibitors from 19 countries

**More than 22 000**  
visitors from 55 countries

### More image:

Presence at the largest and the most relevant industry event

### More insights:

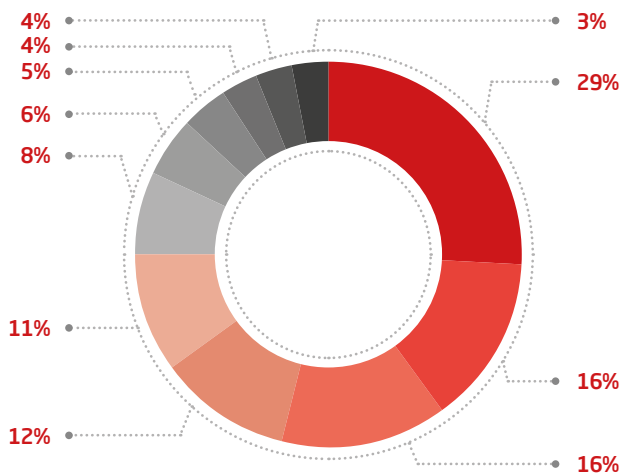
Comprehensive overview of all markets, innovations and trends

### More internationality:

Global hub with worldwide network

### More business:

Contact to decision-makers with investment confidence  
Exhibitors especially value that 82% of specialist visitors are directly involved in the decision-making process



## Exhibition Sectors



All around  
construction  
sites



Mining, extraction  
and processing  
of raw materials



Production  
of building  
materials



Components  
and service  
suppliers

## Visitors' Profile\*

- 29% Repair & Maintenance of equipment
- 16% Rent of construction equipment
- 16% Industrial construction
- 12% Housing construction
- 11% Roads, bridges and tunnels
- 8% Assembly works
- 6% Education
- 5% Open, underground mining
- 4% Housing and communal services
- 4% Insurance, leasing, financial services
- 3% Enabling works

\*Source: Visitor / Exhibitor survey bauma CTT RUSSIA 2019

## General information

### Deadline for application

March 31, 2020

### Organizer

Messe Muenchen Rus  
+7 (495) 120-37-87  
info@mm-rus.com

### For participation

Maritta Lepp  
+49 89 949-20254  
maritta.lepp@messe-muenchen.de  
Irina Probst  
+49 89 949-20255  
irina.probst@messe-muenchen.de

### About the exhibition

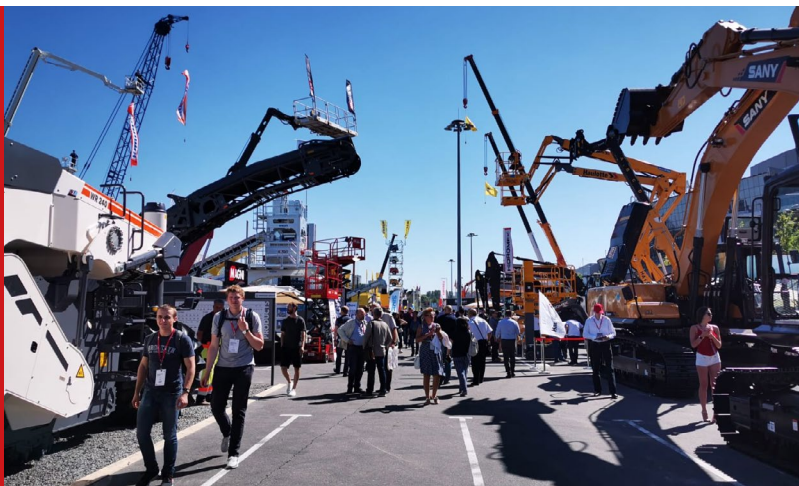
May 26 – 29, 2020  
IEC "Crocus Expo", Moscow, Russia  
Pavilion 3  
Halls 13, 14, 15  
and Outdoor area

→ [bauma-ctt.ru](http://bauma-ctt.ru)

### Construction equipment innovations in Russia contest

May 27, 2020  
Apply till March 1<sup>st</sup>, 2020

→ [construction-innovation.ru](http://construction-innovation.ru)



bauma NETWORK – Visit us around the world

bauma  
bauma CHINA

bauma CONEXPO INDIA  
bauma CONEXPO AFRICA

bauma CTT RUSSIA  
M&T EXPO  
PART OF bauma NETWORK